

VACUUM AND PRESSURE

STANDARD PRODUCT CATALOG



 **Rietschle
Thomas**

A Thomas Industries Company

RIETSCHLE THOMAS

Delivering Value in Vacuum Pumps & Compressors

Time and again, our OEM customers have told us how much they value our help in making their design projects a success. With the industry's most experienced design engineering team, we develop vacuum pump and compressor solutions that meet both your performance and cost requirements. This commitment to "delivering value" is at the heart of all that we do. To learn more, request our free publication, "Rewriting the Value Equation For Vacuum Pumps and Compressors" at www.rtpumps.com or by calling 920-457-4891.

TABLE OF CONTENTS

WOB-L PISTON PUMPS & COMPRESSORS	4
ARTICULATING PISTON COMPRESSORS	8
LINEAR PUMPS & COMPRESSORS	12
DIAPHRAGM PUMPS & COMPRESSORS	14
ROTARY PUMPS & COMPRESSORS	18
TANK MOUNTED PUMPS & COMPRESSORS	22
LIQUID PUMPS & COMPRESSORS	22

STANDARD PRODUCTS

As the world leader in pressure and vacuum technologies, Rietschle Thomas has been serving the needs of OEMs for more than four decades. During that time, we've partnered with thousands of OEM design engineers to develop vacuum pump and compressor solutions that enhance the quality and dependability of their finished products. Perhaps that's why so many manufacturers of medical devices, business machines, automobiles, packaging equipment, and the like have turned to Rietschle Thomas for help.

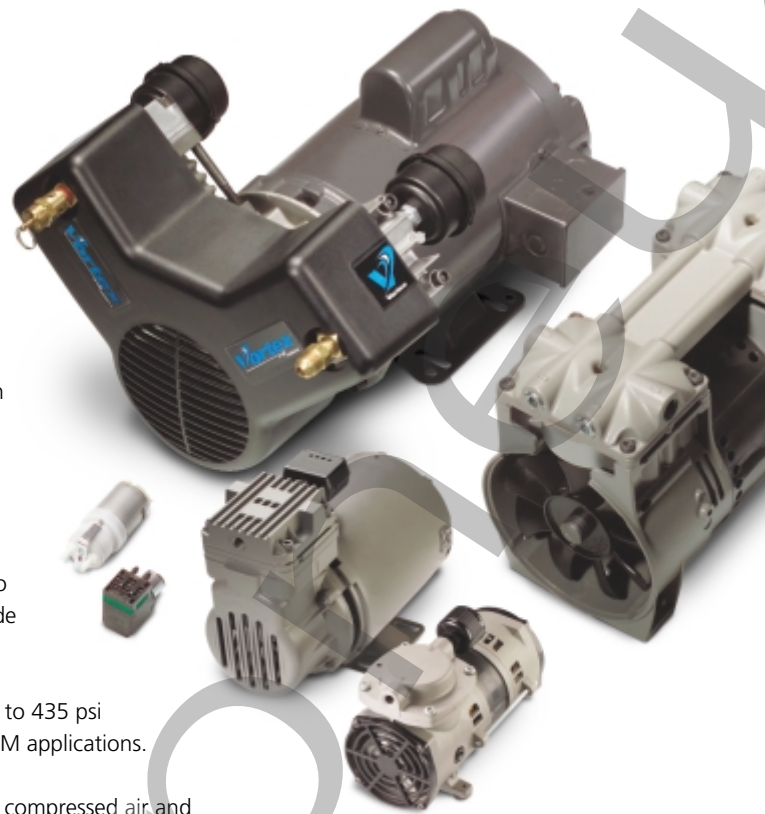
Our mission of "delivering value" in vacuum pumps and compressors often involves the creation of a custom design. But in many cases, the best value can be achieved by selecting one of our standard products. The following pages outline our standard product offering. If your requirements dictate a custom solution, we'll be glad to help.

PRESSURE – The pressure spectrum ranges from .03 in.HG (1 mbar) up to 435 psi (30 bar). Five operating principles are utilized in covering a multitude of OEM applications.

VACUUM – The vacuum spectrum ranges from 29.6 in.HG (990 mbar) up to 435 psi (30 bar). Five operating principles are utilized in covering a multitude of OEM applications.

SIMULTANEOUS PRESSURE AND VACUUM – Many applications require compressed air and vacuum simultaneously.

LIQUID – Based on four different operating principles, Thomas pumps achieve a flow rate of up to 5 lpm and a pressure of up to 145 psi (10 bar) for liquid applications. These pumps are self-priming and can also be used for dosing purposes.



OPERATING PRINCIPLES

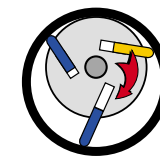


Dry running WOB'L piston pump. Best performance characteristics for high pressures. Mainly used as a compressor.
Volume flow: 6.35 cfm (180 lpm) max.
Pressure: 435 psi (30 bar) max.

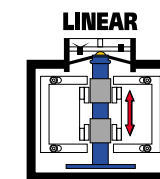


Dry running diaphragm pump. Characterised by a high efficiency, low noise level and good tightness. Adapts well to different gases. Used equally as a compressor and vacuum pump.
Volume flow: 3.12 cfm (90 lpm) max.
Pressure: 41 psi (2.8 bar) max.
End vacuum: <.03 in.HG (1mbar)

ROTARY VANE

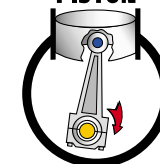


Dry running and self-lubricating rotary vane pump. Low vibration, nearly pulsation free, compact and in some cases reversible. Mainly used as a vacuum pump.
Volume flow: 21.00 cfm (595 lpm) max.
Pressure: 23 psi (1.6 bar) max.
Typical end vacuum: 4.44 in.HG (150 mbar)



Dry running diaphragm pump. Two different means of actuation: linear and vibrating armature. Very high life time, low noise level, and high efficiency. Used as a vacuum and pressure pump.
Volume flow: 10.59 cfm (300 lpm) max.
Pressure: 10 psi (0.7 bar) max.
Vacuum: -16.28 in.HG (-550 mbar)

ARTICULATING PISTON



Dry running piston pump. Well suited for applications requiring high pressures. Mainly used as a compressor.
Volume flow: 12.92 cfm (365 lpm) max.
Pressure: 175 psi (12 bar) max.



Applied operating principles: diaphragm (motor or linear drive), peristaltic (direct or gear drive), rotary vane or Gerotor.
Free flow: 5 lpm max.
Suction height: 8m H₂O max.
Pressure height: 100m H₂O max.

Linear Pumps & Compressors

5006/5015/5020



5030-A, 5040-A, 5060-A
5030V-A, 5040V-A 5060V-A



5078S/5100S/5120S



5150S/5200S



PRESSURE															
MODEL SERIES	MFG. CODE	HP	MOTOR CAPACITY		COMPRESSOR PERFORMANCE (CFM @ PSI)							MAXIMUM PRESSURE (PSI)			
			VOLTAGE	TYPE	0	1	2	3	4	5	6	7	CONTINUOUS	INTERMITTENT	RESTART
5006	150018	—	115	LM	.89	.48	.15	—	—	—	—	—	2.0	2.6	2.6
5015	150026	—	115	LM	1.06	.79	.48	.19	—	—	—	—	2.5	3.8	3.8
5020	150000	—	115	LM	1.24	1.00	.72	.41	.16	—	—	—	3.0	4.5	4.5
5030-A	150035	—	115	LM	2.00	1.62	1.20	.69	.14	—	—	—	3.0	4.2	4.2
5040-A	150037	—	115	LM	2.30	1.96	1.58	1.12	.60	.10	—	—	3.5	5.1	5.1
5060-A	150039	—	115	LM	3.20	2.80	2.38	1.88	1.40	.84	.31	—	4.0	6.3	6.3
5078S	150074	—	115	LM	3.60	3.45	3.20	2.75	2.10	1.35	0.50	—	3.5	6.3	6.3
5100S	150044	—	115	LM	4.62	4.37	3.97	3.41	2.71	1.90	1.06	—	4.0	7.2	7.2
5120S	150045	—	115	LM	5.67	5.38	4.92	4.32	3.64	2.84	2.00	1.16	4.5	8.3	8.3
5150S	150046	—	115	LM	7.73	7.10	6.09	5.01	4.20	2.30	.72	—	3.5	6.6	6.6
5200S	150047	—	115	LM	9.55	8.78	8.05	7.11	5.90	4.76	3.33	1.61	4.5	8.2	8.2
6005SE	150081	—	115	LM	.41	.26	.12	.01	—	—	—	—	2.0	3.0	3.0
6005SE/230	150084	—	230	LM	.35	.18	.04	—	—	—	—	—	2.0	3.0	3.0
6015SE	150098	—	115	LM	1.10	.62	.09	—	—	—	—	—	2.0	2.3	2.3
6025SE	150057	—	115	LM	2.00	1.62	1.20	.70	.38	—	—	—	4.0	5.0	5.0
6025SE/12v	150108	—	12v	LM	1.50	1.08	.73	.41	.16	—	—	—	4.0	4.7	4.7
6025SE/24v	150109	—	24v	LM	1.50	1.08	.73	.41	.16	—	—	—	4.0	4.7	4.7

VACUUM												
MODEL SERIES	MFG. CODE	HP	MOTOR CAPACITY		VACUUM PERFORMANCE (CFM @ IN.HG)					VACUUM (IN.HG)		
			VOLTAGE	TYPE	0	2	4	6	8	10	MAXIMUM	RESTART
6025SE	150057	—	115	LM	2.00	1.62	1.25	.80	.35	—	8.0	10
6025SE/12v	150108	—	12v	LM	1.50	1.09	0.74	.43	.17	—	8.0	—
6025SE/24v	150109	—	24v	LM	1.50	1.09	0.74	.43	.17	—	8.0	—
6015SE	150098	—	115	LM	1.10	0.63	0.10	—	—	—	4.3	—

Specifications

PRESSURE											
MODEL SERIES	AMBIENT TEMPERATURE		ELECTRICAL RATED LOAD			INSUL. CLASS	SPEED (RPM)	THERMAL PROTECTOR	NET WEIGHT (LBS.)	DIMENSIONS (H x W x L)	
	MINIMUM	MAXIMUM	RUN (AMPS)	POWER (WATTS)	START (AMPS)						
5006	32° F	104° F	0.1	6	0.1	A	—	YES	5.4	4.38 x 5.04 x 5.83	
5015	32° F	104° F	0.2	10	0.2	A	—	YES	5.5	4.38 x 5.04 x 5.83	
5020	32° F	104° F	0.3	12	0.3	A	—	YES	5.5	4.38 x 5.04 x 5.83	
5030-A	32° F	104° F	0.7	33	0.7	A	—	YES	11.5	7.80 x 6.83 x 8.09	
5040-A	32° F	104° F	1.0	44	1.0	A	—	YES	12.0	7.80 x 6.83 x 8.09	
5060-A	32° F	104° F	1.5	69	1.5	A	—	YES	13.5	7.80 x 6.83 x 8.09	
5078S	32° F	104° F	2.1	78	2.1	A	—	YES	18.5	8.59 x 7.05 x 8.94	
5100S	32° F	104° F	2.7	107	2.7	A	—	YES	18.5	8.59 x 7.05 x 8.94	
5120S	32° F	104° F	2.8	157	2.8	A	—	YES	18.5	8.59 x 7.05 x 8.94	
5150S	32° F	104° F	2.9	168	2.9	A	—	YES	25.5	9.93 x 7.64 x 10.01	
5200S	32° F	104° F	4.6	261	4.6	A	—	YES	25.5	9.93 x 7.64 x 10.01	
6005SE	32° F	104° F	.12	10	.12	B	—	YES	1.1	3.13 x 2.93 x 3.77	
6005SE/230	32° F	104° F	.05	10	.05	B	—	YES	1.1	3.13 x 2.93 x 3.77	
6015SE	32° F	104° F	.23	15	.23	B	—	YES	2.7	3.33 x 4.60 x 5.05	
6025SE	32° F	104° F	.46	40	.46	B	—	YES	3.3	3.33 x 4.60 x 5.05	
6025SE/12v	32° F	104° F	2.7	—	2.7	B	—	NO	3.3	3.33 x 4.60 x 5.05	
6025SE/24v	32° F	104° F	1.5	—	1.5	B	—	NO	3.3	3.33 x 4.60 x 5.05	

Dimensional drawings and other models available. Visit our web site at: www.rtpumps.com

6005SE



6015SE/6025SE/6025SE DC



VACUUM											
MODEL SERIES	AMBIENT TEMPERATURE		ELECTRICAL RATED LOAD			INSUL. CLASS	SPEED (RPM)	THERMAL PROTECTOR	NET WEIGHT (LBS.)	DIMENSIONS (H x W x L)	
	MINIMUM	MAXIMUM	RUN (AMPS)	POWER (WATTS)	START (AMPS)						
6025SE	32° F	104° F	0.46	40	0.46	B	—	YES	3.3	3.33 x 4.60 x 5.05	
6025SE/12v	32° F	104° F	2.7	—	2.7	B	—	NO	3.3	3.33 x 4.60 x 5.05	
6025SE/24v	32° F	104° F	1.5	—	1.5	B	—	NO	3.3	3.33 x 4.60 x 5.05	
6015SE	32° F	104° F	.23	15	.23	B	—	YES	2.7	3.33 x 4.60 x 5.05	

Linear Pumps & Compressors (SMG)

SMG



PRESSURE															
MODEL SERIES	MFG. CODE	HP	MOTOR CAPACITY		COMPRESSOR PERFORMANCE (LPM @ PSI)							MAXIMUM PRESSURE (PSI)			
			VOLTAGE	TYPE	0	1	2	3	4	5	6	7	CONTINUOUS	INTERMITTENT	RESTART
SMG 4	9040110	—	230	LM	1.40	1.22	1.17	.90	.65	.40	.18	—	6.5	—	—
SMG 4	9041110	—	115	LM	1.60	1.40	1.20	1.10	.80	.40	.10	—	6.5	—	—
SMG 4	9045110	—	24v	LM	1.30	1.20	1.00	.90	.70	.10	—	—	5.8	—	—
SMG 4	9046110	—	12v	LM	1.30	1.10	.90	.60	.30	—	—	—	5.0	—	—

VACUUM												
MODEL SERIES	MFG. CODE	HP	MOTOR CAPACITY		VACUUM PERFORMANCE (LPM @ IN.HG)					VACUUM (IN.HG)		
			VOLTAGE	TYPE	0	2	4	6	8	10	MAXIMUM	RESTART
SMG 4	9040110	—	230	LM	1.40	1.10	.90	.69	.30	—	10.3	—
SMG 4	9041110	—	115	LM	1.60	1.10	.70	.50	.30	—	10.3	—
SMG 4	9045110	—	24v	LM	1.30	1.00	.50	.40	.20	—	10.3	—
SMG 4	9046110	—	12v	LM	1.30	.90	.50	.40	.20	—	10.3	—

Specifications

PRESSURE											
MODEL SERIES	AMBIENT TEMPERATURE		ELECTRICAL RATED LOAD			INSUL. CLASS	SPEED (RPM)	THERMAL PROTECTOR	NET WEIGHT (LBS.)	DIMENSIONS (H x W x L)	
	MINIMUM	MAXIMUM	RUN (AMPS)	POWER (WATTS)	START (AMPS)						
SMG 4	32° F	140° F	—	6	—	—	—	NO	0.4	1.2 x 1.4 x 2.8	
SMG 4	32° F	140° F	—	6	—	—	—	NO	0.4	1.2 x 1.4 x 2.8	
SMG 4	32° F	140° F	—	6	—	—	—	NO	0.4	1.2 x 1.4 x 2.8	
SMG 4	32° F	140° F	—	6	—	—	—	NO	0.4	1.2 x 1.4 x 2.8	

VACUUM											
MODEL SERIES	AMBIENT TEMPERATURE		ELECTRICAL RATED LOAD			INSUL. CLASS	SPEED (RPM)	THERMAL PROTECTOR	NET WEIGHT (LBS.)	DIMENSIONS (H x W x L)	
	MINIMUM	MAXIMUM	RUN (AMPS)	POWER (WATTS)	START (AMPS)						
SMG 4	32° F	140° F	—	6	—	—	—	NO	0.4	1.2 x 1.4 x 2.8	
SMG 4	32° F	140° F	—	6	—	—	—	NO	0.4	1.2 x 1.4 x 2.8	
SMG 4	32° F	140° F	—	6	—	—	—	NO	0.4	1.2 x 1.4 x 2.8	
SMG 4	32° F	140° F	—	6	—	—	—	NO	0.4	1.2 x 1.4 x 2.8	

Diaphragm Pumps & Compressors (LPM)

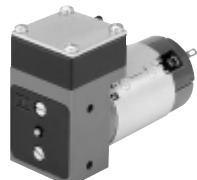
2002 DC



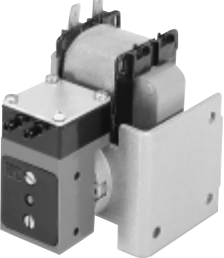
3013 DC



5002 DC



5002 AC



7006Z DC



PRESSURE														
MODEL SERIES	HP	MOTOR CAPACITY		COMPRESSOR PERFORMANCE (LPM @ PSI)								MAXIMUM PRESSURE (PSI)		
		VOLTAGE	TYPE	0	5	10	20	40	60	80	100	CONTINUOUS	INTERMITTENT	RESTART
2002-0304	—	6	PM	.35	—	—	—	—	—	—	—	2.0	6	2
3013-0006	—	12	PM	1.1	.23	—	—	—	—	—	—	2.0	6.5	—
3013-0007	—	4.5	PM	.78	.13	—	—	—	—	—	—	2.2	6.5	—
3013-0008	—	6	PM	.8	.13	—	—	—	—	—	—	2.0	6	—
5002-0582	—	115/60	SP	1.7	1.3	1.0	—	—	—	—	—	4.0	17	0
5002-0408	—	12	PM	2.0	1.4	1.0	.5	—	—	—	—	4.0	17	17
5002-0019	—	24	PM	2.0	1.4	1.0	.5	—	—	—	—	4.0	17	17
5002-0018	—	6	PM	2.0	1.4	1.0	—	—	—	—	—	4.0	17	17
5002-0010	—	230	SP	1.7	1.3	1.0	—	—	—	—	—	4.0	17	0
7006-0065	—	12	PM	7.2	6.8	5.0	3.9	2.9	2.4	1.8	—	12	36	12
7006-0054*	—	12	PM	13.8	12.5	8.0	7.1	5.7	4.8	4.1	—	12	36	12
7006-0063	—	115	SP	8.1	7.0	6.4	5.8	4.6	3.5	3.0	—	12	36	0
7006-0057*	—	12	PM	6.2	5.5	5.0	4.5	—	—	—	—	12	36	36
7006-0066	—	24	PM	7.2	6.8	5.0	3.9	2.9	2.4	1.8	—	12	36	36
7006-0055*	—	24	PM	13.8	12.5	8.0	7.1	5.7	4.8	4.1	—	12	36	36
7006-0067	—	230/50	SP	7.4	6.2	5.1	3.3	.85	—	—	—	12	36	0
7010-1773	—	12	PM	6.5	4.7	3.3	2.2	1.9	1.4	—	—	15	32	0
7010-2514	—	24	PM	6.5	4.7	3.3	2.2	1.9	1.4	—	—	15	32	0
7010-1792*	—	12	PM	12.0	8.3	6.2	3.8	2.5	1.3	—	—	12	29	0
7010-2133*	—	24	PM	12.0	8.3	6.2	3.8	2.5	1.3	—	—	12	29	0
7011-0008	—	12	PM	12.4	9.1	7.0	4.2	3.5	2.6	—	—	12	33	0
7011-0042	—	24	PM	12.4	9.1	7.0	4.2	3.5	2.6	—	—	12	33	0
7011-0037*	—	12	PM	—	—	—	—	—	—	—	—	N/A	N/A	N/A
7011-0069*	—	24	PM	—	—	—	—	—	—	—	—	N/A	N/A	N/A
7012-0006	—	12	PM	9.0	4.6	1.3	—	—	—	—	—	10.8	12.3	7.3
7012-0007	—	24	PM	9.0	4.6	1.3	—	—	—	—	—	10.8	12.3	7.3

*Twin Design

VACUUM												
MODEL SERIES	HP	MOTOR CAPACITY		VACUUM PERFORMANCE (LPM @ IN.HG.)						VACUUM (IN.HG.)		
		VOLTAGE	TYPE	0	5	10	15	20	25	MAXIMUM	RESTART	
2002-0304	—	6	PM	.35	—	—	—	—	—	10.5	4.4	—
3013-0006	—	12	PM	1.1	.3	—	—	—	—	—	10.0	—
3013-0007	—	4.5	PM	.78	.35	.07	—	—	—	—	11.9	—
3013-0008	—	6	PM	.8	.33	—	—	—	—	—	10.0	—
5002-0582	—	115/60	SP	1.7	1.0	.5	—	—	—	—	14.8	0
5002-0408	—	12	PM	2.0	1.3	.9	—	—	—	—	14.8	14.8
5002-0019	—	24	PM	2.0	1.3	.9	—	—	—	—	14.8	14.8
5002-0018	—	6	PM	2.0	1.3	.9	—	—	—	—	14.8	14.8
5002-0010	—	230	SP	1.7	1.0	.5	—	—	—	—	14.8	0
7006-0065	—	12	PM	7.2	5.0	3.1	1.8	.09	—	—	25.1	25.1
7006-0054*	—	12	PM	13.8	12.0	6.4	3.6	2.0	.2	—	25.1	25.1
7006-0063	—	115	SP	8.1	5.8	3.7	2.1	1.0	—	—	23.7	0
7006-0057*	—	12	PM	6.2	4.3	2.8	2.0	.9	.2	—	28.4	28.4
7006-0066	—	24	PM	7.2	5.0	3.1	1.8	.9	—	—	25.1	25.1
7006-0055*	—	24	PM	13.8	12.0	6.4	3.6	2.0	.2	—	25.1	25.1

*Twin Design

Specifications

PRESSURE										
MODEL SERIES	AMBIENT TEMPERATURE		ELECTRICAL RATED LOAD			INSUL CLASS	SPEED (RPM)	THERMAL PROTECTOR	NET WEIGHT (LBS.)	DIMENSIONS (H x W x L)
	MINIMUM	MAXIMUM	RUN (AMPS)	POWER (WATTS)	START (AMPS)					
2002-0304	32° F	122° F	.05	.3	N/A	E	N/A	NO	.04	1.0 x .7 x 1.3
3013-0006	32° F	122° F	—	—	—	—	N/A	NO	.09	1.3 x .89 x 1.71
3013-0007	32° F	122° F	.10	—	—	E	N/A	NO	.09	1.3 x .89 x 1.71
3013-0008	32° F	122° F	—	—	—	—	N/A	NO	.09	1.3 x .89 x 1.71
5002-0582	50° F	104° F	.50	23	N/A	E	3000	NO	1.3	3.3 x 2.4 x 3.4
5002-0408	50° F	122° F	.34	4	N/A	E	3000	NO	.3	2.1 x 1.2 x 3.1
5002-0019	50° F	122° F	.17	4	N/A	E	3000	NO	.3	2.1 x 1.2 x 3.1
5002-0018	50° F	122° F	—	—	—	E	3000	—	.3	2.1 x 1.2 x 3.1
5002-0010	50° F	104° F	—	—	—	E	3000	—	1.3	3.3 x 2.4 x 3.4
7006-0065	32° F	122° F	2.3	28	5.4	E	N/A	NO	1.3	3.07 x 1.85 x 4.85
7006-0054*	32° F	122° F	3.7	48	18	E	N/A	NO	2.0	3.07 x 1.85 x 5.99
7006-0063	32° F	122° F	.9	N/A	N/A	E	N/A	NO	2.1	3.07 x 2.40 x 4.85
7006-0057*	50° F	122° F	3.7	48	18	B	2800	NO	2.0	3.07 x 1.85 x 5.99
7006-0066	50° F	122° F	1.15	28	2.7	B	—	—	1.3	3.07 x 1.85 x 4.85
7006-0055*	50° F	122° F	2.0	48	11	B	—	—	2.0	3.07 x 1.85 x 5.99
7006-0067	32° F	122° F	—	—	—	E	—	—	2.1	3.07 x 2.4 x 4.85
7010-1773	32° F	122° F	1.00	13	N/A	E	3000	NO	1.3	3.4 x 1.9 x 4.7
7010-2514	32° F	122° F	—	13	N/A	E	—	—	1.3	3.4 x 1.9 x 4.7
7010-1792*	32° F	104° F	2.40	29	N/A	E	3000	NO	1.6	3.4 x 1.9 x 6.3
7010-2133*	32° F	104° F	2.4	29	N/A	E	—	—	1.6	3.4 x 1.9 x 6.3
7011-0008	32° F	104° F	2.40	29	N/A	E	3000	NO	2.0	3.4 x 2.4 x 5.7
7011-0042	32° F	104° F	1.20	29	N/A	E	3000	NO	2.0	3.4 x 2.4 x 5.7
7011-0037*	59° F	104° F	3.00	35	N/A	E	3000	NO	3.0	3.8 x 2.3 x 7.6
7011-0069*	59° F	104° F	1.50	35	N/A	E	3000	NO	3.0	3.8 x 2.3 x 7.6
7012-0006	32° F	122° F	.80	10.0	N/A	E	N/A	NO	1.2	4.0 x 3.7 x 3.1
7012-0007	32° F	122° F	.40	8.5	N/A	E	N/A	NO	1.2	4.0 x 3.7 x 3.1

Dimensional drawings and other models available. Visit our web site at: www.rtpumps.com

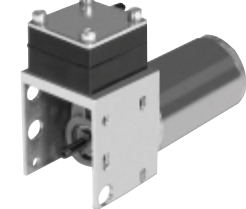
7006 DC



7006 AC



7010 DC



7011 DC



continued →

Rotary Pumps & Compressors (1/3 - 3/4 HP)

QR-0030
QR-0050



QR-0080
QR-0100



SR-0015VP



TA-0030P
TA-0040P



PRESSURE															
MODEL SERIES	MFG. CODE	HP	MOTOR CAPACITY		COMPRESSOR PERFORMANCE (CFM @ PSI)								MAXIMUM PRESSURE (PSI)		
			VOLTAGE	TYPE	0	5	10	15	20	25	30	35	CONTINUOUS	INTERMITTENT	RESTART
QR-0030	291305	1/3	100-115/200-240/60/50/1	SPh	3.2	2.7	2.2	1.7	—	—	—	—	10	15	0
QR-0050	291306	1/3	100-115/200-240/60/50/1	SPh	4.6	4.1	3.6	3.0	—	—	—	—	10	15	0
QR-0080	291303	3/4	100-115/200-240/60/50/1	CS	8.0	7.35	6.8	6.2	—	—	—	—	10	15	0
QR-0100	291304	3/4	100-115/200-240/60/50/1	CS	10.0	9.4	8.8	—	—	—	—	10	10	0	
SR-0015-VP	291293	1/10	220/240/60/50/1	PSC	1.2	0.95	0.75	—	—	—	—	10	10	0	
SR-0015-VP	291275	1/10	115/60/50/1	PSC	1.5	1.2	0.95	—	—	—	—	10	10	0	
SR-0015	291277	1/10	115/60/50/1	SPh	1.5	1.2	0.95	—	—	—	—	10	10	0	
TA-0030-P	291281	1/4	110/220/240/50/1	SPh	2.6	2.0	1.55	0.9	—	—	—	15	15	0	
TA-0030-P	291245	1/4	115/60/50/1	SPh	3.0	2.4	1.8	1.2	—	—	—	15	15	0	
TA-0040-P	291283	1/3	110/220/240/50/1	SPh	3.3	2.9	2.6	2.0	—	—	—	15	15	0	
TA-0040-P	291236	1/3	115/60/50/1	SPh	4.0	3.6	3.2	2.6	—	—	—	15	15	0	
TA-0075-P	291248	1/2	110/220/240/50/1	CS	6.0	5.6	5.2	4.5	—	—	—	10	15	0	
TA-0075-P	291239	1/2	115/230/60/1	CS	7.2	6.7	6.2	5.7	—	—	—	10	15	0	
TA-0100-P	291252	3/4	110/220/240/50/1	CS	8.3	7.9	7.0	—	—	—	—	10	10	0	
TA-0100-P	291242	3/4	115/230/60/1	CS	10.0	9.5	9.0	—	—	—	—	10	10	0	

VACUUM													
MODEL SERIES	MFG. CODE	HP	MOTOR CAPACITY		VACUUM PERFORMANCE (CFM @ IN.HG)						VACUUM (IN.HG)		
			VOLTAGE	TYPE	0	1.5	3	5	10	15	MAXIMUM	RESTART	
QR-0030	291305	1/3	115/60/1	SPh	3.2	2.5	1.9	1.3	.6	—	25.0	0	
QR-0050	291306	1/3	115/60/1	SPh	4.6	3.8	2.9	2.0	1.2	.3	26.0	0	
QR-0080	291303	3/4	115/60/1	CS	8.0	6.4	4.8	3.4	2.0	.4	26.0	0	
QR-0100	291304	3/4	115/60/1	CS	10.0	8.1	6.2	4.4	2.5	.8	26.0	0	
SR-0015-VP	291293	1/10	220/240/60/50/1	PSC	1.2	.91	.64	.41	.17	—	24.0	0	
SR-0015-VP	291275	1/10	115/60/50/1	PSC	1.5	1.1	.8	.5	.2	—	24.0	0	
SR-0015	291277	1/10	115/60/50/1	SPh	1.5	1.1	.8	.5	.2	—	24.0	0	
TA-0030-V	291280	1/6	110/220/240/50/1	SPh	2.5	1.95	1.4	.9	.37	—	24.0	0	
TA-0030-V	291244	1/6	115/60/50/1	SPh	3.0	2.35	1.7	1.1	.45	—	24.0	0	
TA-0040-V	291282	1/4	110/220/240/50/1	SPh	3.3	2.7	2.0	1.4	.75	—	25.0	0	
TA-0040-V	291246	1/4	115/60/50/1	SPh	4.0	3.23	2.46	1.69	.92	.15	26.0	0	
TA-0075-V	291247	1/2	110/220/240/50/1	CS	6.0	4.9	3.6	2.55	1.4	.25	26.0	0	
TA-0075-V	291238	1/2	115/230/60/1	CS	7.2	5.9	4.4	3.1	1.7	.3	26.0	0	
TA-0100-V	291251	3/4	110/220/240/50/1	CS	8.1	6.65	5.15	3.7	2.1	.32	26.0	0	
TA-0100-V	291241	3/4	115/230/60/1	CS	10.0	8.1	6.2	4.3	2.4	.4	26.0	0	

Specifications

PRESSURE											
MODEL SERIES	AMBIENT TEMPERATURE		ELECTRICAL RATED LOAD			INSUL. CLASS	SPEED (RPM)	THERMAL PROTECTOR	NET WEIGHT (LBS.)	DIMENSIONS (H x W x L)	
	MINIMUM	MAXIMUM	RUN (AMPS)	POWER (WATTS)	START (AMPS)						
QR-0030	32° F	104° F	5.6/2.7	300/250	26.0/13.0	B	1725/1425	YES	33.0	5.80 x 5.63 x 13.56	
QR-0050	32° F	104° F	5.6/2.7	360/315	26.0/13.0	B	1725/1425	YES	33.0	5.80 x 5.63 x 13.56	
QR-0080	32° F	104° F	10.4/5.5	790/640	37.0/17.0	B	1725/1425	YES	54.0	8.37 x 6.50 x 16.41	
QR-0100	32° F	104° F	10.4/5.5	900/760	37.0/17.0	B	1725/1425	YES	54.0	8.37 x 6.50 x 16.41	
SR-0015-VP	32° F	104° F	.55	120	2.2	B	2820	YES	8.0	4.94 x 3.86 x 8.27	
SR-0015-VP	32° F	104° F	1.6	120	5.0	B	3500	YES	8.0	4.94 x 3.86 x 8.27	
SR-0015	32° F	104° F	1.6	120	13.5	B	3500	YES	8.5	4.94 x 3.86 x 8.27	
TA-0030-P	32° F	104° F	2.5	300	13.0	B	1400	YES	20.0	8.75 x 5.76 x 10.96	
TA-0030-P	32° F	104° F	4.8	370	25.0	B	1725	YES	20.0	8.75 x 5.76 x 10.96	
TA-0040-P	32° F	104° F	1.85	380	13.0	B	1425	YES	28.0	8.75 x 5.70 x 11.42	
TA-0040-P	32° F	104° F	5.6	460	27.0	B	1710	YES	28.0	8.75 x 5.70 x 11.42	
TA-0075-P	32° F	104° F	3.8	570	17.0	B	1425	YES	44.0	8.36 x 6.50 x 13.70	
TA-0075-P	32° F	104° F	8.6	700	35.0	B	1720	YES	42.0	8.37 x 6.50 x 13.45	
TA-0100-P	32° F	104° F	3.5	560	18.0	B	1425	YES	49.0	8.37 x 6.50 x 14.20	
TA-0100-P	32° F	104° F	10.0	950	32.0	B	1720	YES	45.0	8.75 x 6.50 x 13.70	

VACUUM											
MODEL SERIES	AMBIENT TEMPERATURE		ELECTRICAL RATED LOAD			INSUL. CLASS	SPEED (RPM)	THERMAL PROTECTOR	NET WEIGHT (LBS.)	DIMENSIONS (H x W x L)	
	MINIMUM	MAXIMUM	RUN (AMPS)	POWER (WATTS)	START (AMPS)						
QR-0030	32° F	104° F	5.6/2.7	300/250	26.0/13.0	B	1725/1425	YES	33.0	5.80 x 5.63 x 13.56	
QR-0050	32° F	104° F	5.6/2.7	360/315	26.0/13.0	B	1725/1425	YES	33.0	5.80 x 5.63 x 13.56	
QR-0080	32° F	104° F	10.4/5.5	790/640	37.0/17.0	B	1725/1425	YES	54.0	8.37 x 6.50 x 16.41	
QR-0100	32° F	104° F	10.4/5.5	900/760	37.0/17.0	B	1725/1425	YES	54.0	8.37 x 6.50 x 16.41	
SR-0015-VP	32° F	104° F	.55	120	2.2	B	2820	YES	8.0	4.94 x 3.86 x 8.27	
SR-0015-VP	32° F	104° F	1.6	120	5.0	B	3500	YES	8.0	4.94 x 3.86 x 8.27	
SR-0015	32° F	104° F	1.6	120	13.5	B	3500	YES	8.5	4.94 x 3.86 x 8.27	
TA-0030-V	32° F	104° F	1.8	250	9.0	B	1425	YES	20.0	7.10 x 6.37 x 14.35	
TA-0030-V	32° F	104° F	4.5	395	21.4	B	1725	YES	20.0	7.10 x 6.37 x 14.35	
TA-0040-V	32° F	104° F	2.2	285	12.5	B	1425	YES	29.0	7.09 x 6.37 x 14.35	
TA-0040-V	32° F	104° F	4.8	330	25.5	B	1710	YES	27.0	7.09 x 6.37 x 14.35	
TA-0075-V	32° F	104° F	3.5	580	17.0	B	1425	YES	46.0	8.37 x 6.75 x 13.94	
TA-0075-V	32° F	104° F	8.0	670	35.0	B	1725	YES	44.0	8.37 x 6.75 x 13.69	
TA-0100-V	32° F	104° F	4.8	700	18.0	B	1425	YES	51.0	8.75 x 6.75 x 14.44	
TA-0100-V	32° F	104° F	8.9	850	37.0	B	1720	YES	47.0	8.75 x 6.75 x 13.94	

Dimensional drawings and other models available. Visit our web site at: www.rtpumps.com

TA-0030V
TA-0040V



TA-0075P
TA-0100P



TA-0075V
TA-0100V



Tank Mounted Pumps & Compressors

405FDC



607FA/FC



688FE44



PRESSURE															
MODEL SERIES	MFG. CODE	HP	MOTOR CAPACITY		COMPRESSOR PERFORMANCE (CFM @ PSI)								MAXIMUM PRESSURE (PSI)		
			VOLTAGE	TYPE	0	5	10	20	40	60	80	100	CONTINUOUS	INTERMITTENT	RESTART
405FDC38/12	—	1/10	12VDC	PM	.92	—	.71	.61	.53	.44	.35	.27	100	100	100
607FA22	—	1/8	115/60	SP	.84	—	.74	.64	.46	.31	.20	.10	100	100	100
607FCD22	—	1/8	115/60	SP	.78	—	.70	.61	.46	.33	.24	.12	100	100	100
688FE44	—	1/3	115/60/1	PSC	1.60	—	1.48	1.37	1.21	1.05	.91	.76	100	100	100
110FK75	—	3/4	115/60	CS	4.25	—	3.88	3.60	3.07	2.77	2.45	2.18	100	100	100
1107FTK75	—	3/4	115/60	CS	5.25	—	3.88	3.60	3.07	2.77	2.45	2.18	100	100	100

Specifications

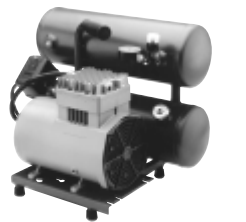
PRESSURE										
MODEL SERIES	AMBIENT TEMPERATURE		ELECTRICAL RATED LOAD			INSUL. CLASS	SPEED (RPM)	THERMAL PROTECTOR	NET WEIGHT (LBS.)	DIMENSIONS (H x W x L)
	MINIMUM	MAXIMUM	RUN (AMPS)	POWER (WATTS)	START (AMPS)					
405FDC38/12	50° F	104° F	10.5	—	25	A	3310	YES	18.3	13.39 x 7.00 x 16.50
607FA22	50° F	104° F	3.1	189	5.3	A	1540	YES	25	14.86 x 7.00 x 16.50
607FCD22	50° F	104° F	1.3	174	2.1	A	1105	YES	25	14.86 x 7.00 x 16.50
688FE44	50° F	104° F	3.6	325	9.2	B	1650	YES	28.5	15.51 x 7.00 x 16.50
110FK75	50° F	104° F	10.3	769	38.5	B	1700	YES	60	20.04 x 16.12 x 13.12
1107FTK75	50° F	104° F	10.3	769	38.5	B	1700	YES	59	16.38 x 10.94 x 18.87

Dimensional drawings and other models available. Visit our web site at: www.rtpumps.com

1107FK75



1107FTK75



Liquid Pumps & Compressors

SMF 4



FLG 12/02



FLG 12/01



PRESSURE															
MODEL SERIES	MFG. CODE	HP	MOTOR CAPACITY		COMPRESSOR PERFORMANCE (LPM @ PSI)								MAXIMUM PRESSURE (PSI)		
			VOLTAGE	TYPE	0	2	4	6	7	10	15	CONTINUOUS	INTERMITTENT	RESTART	
SMF 4	9140110	—	230	LM	.27	.24	.20	.17	.10	.05	0	12.3	—	—	
SMF 4	9141110	—	115	LM	.27	.22	.20	.17	.10	.05	0	12.3	—	—	
SMF 4	9145110	—	24v	LM	.26	.24	.19	.13	.05	.02	—	11.6	—	—	
SMF 4	9146110	—	12v	LM	.24	.22	.19	.14	.06	.02	—	10.9	—	—	
FLG 12/02	52000	—	12v	PM	2.50	2.30	2.15	1.95	1.85	1.30	0.6	14	17	—	
FLG 12/01	52100	—	12v	PM	1.00	.90	.70	.65	.55	.30	—	7	14	—	
5002F	5002-1402	—	12v	PM	.40	.37	.34	.32	.30	.27	.23	14	20	—	
5002F	5002-1408	—	12v	PM	.40	.37	.34	.32	.30	.27	.23	7	15	—	
5002FZ	5002-1079	—	12v	PM	.80	.70	.60	.55	.50	.40	.30	—	15	—	

VACUUM													
MODEL SERIES	MFG. CODE	HP	MOTOR CAPACITY		VACUUM PERFORMANCE (LPM @ IN.HG)						VACUUM (IN.HG)		
			VOLTAGE	TYPE	0	2	4	8	12	16	MAXIMUM	RESTART	
SMF 4	9140110	—	230	LM	.27	.25	.23	.20	.15	.08	—	19.2	—
SMF 4	9141110	—	115	LM	.27	.25	.23	.17	.12	.05	—	17.7	—
SMF 4	9145110	—	24v	LM	.26	.24	.22	.15	.09	.04	—	19.2	—
SMF 4	9146110	—	12v	LM	.24	.21	.19	.13	.08	.03	—	17.7	—
FLG 12/02	52000	—	12v	PM	2.50	—	—	—	—	—	—	29	—
FLG 12/01	52100	—	12v	PM	1.00	—	—	—	—	—	—	18	—
5002F	5002-1402	—	12v	PM	.40	—	—	—	—	—	—	18	—
5002F	5002-1408	—	12v	PM	.40	—	—	—	—	—	—	15	—
5002FZ	5002-1079	—	12v	PM	.80	.75	.70	.60	.45	.30	—	15	—

Specifications

PRESSURE										
MODEL SERIES	AMBIENT TEMPERATURE		ELECTRICAL RATED LOAD			INSUL. CLASS	SPEED (RPM)	THERMAL PROTECTOR	NET WEIGHT (LBS.)	DIMENSIONS (H x W x L)
	MINIMUM	MAXIMUM	RUN (AMPS)	POWER (WATTS)	START (AMPS)					
SMF 4	32° F	140° F	—	6	—	—	—	NO	.40	1.59 x 1.38 x 2.83
SMF 4	32° F	140° F	—	6	—	—	—	NO	.40	1.59 x 1.38 x 2.83
SMF 4	32° F	140° F	—	6	—	—	—	NO	.40	1.59 x 1.38 x 2.83
SMF 4	32° F	140° F	—	6	—	—	—	NO	.40	1.59 x 1.38 x 2.83
FLG 12/02	5° F	122° F	1.5	18	—	—	—	NO	2.20	2.0 x 1.97 x 5.9
FLG 12/01	5° F	122° F	1.0	12	—	—	—	NO	.26	1.2 x 1.2 x 3.0
5002F	32° F	158° F	.40	—	—	—	—	NO	.42	1.99 x 1.18 x 3.19
5002F	32° F	158° F	.55	—	—	—	—	NO	.42	1.99 x 1.18 x 3.19
5002FZ	32° F	158° F	.24	—	—	—	—	NO	.64	1.99 x 1.18 x 4.69

5002F



5002FZ

