

39 Series

Air Preparation Units
3/4 through 1 inch

Catalog 9CW-CK-272



WILKERSON®

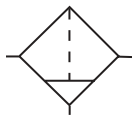
Table of Contents

F39 Series Particulate Filters	2
M39 Series Coalescing Filters	4
R39 Series Regulators	6
B39 Series Filter / Regulators	8
L39 Series EconOmist Lubricators	10
Modular Combinations – 39 Hi-Flow Series	12
Offer Of Sale	17

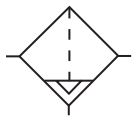
Coast Pneumatics

F39 Series Particulate Filters

**Particulate Filter
F39**



Manual Drain



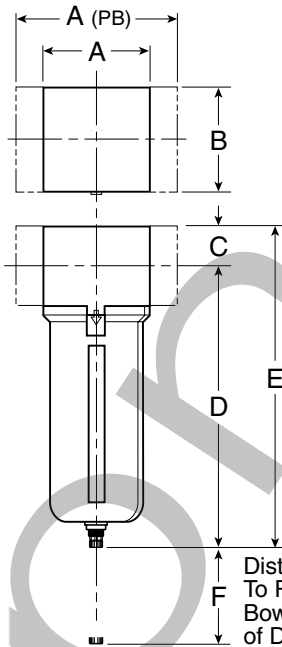
Auto Drain



F39-08-SL00

Features

- Standard 5 micron filtration.
- High flow Capacities.
- 3/4" and 1" NPT ports.
- Port Blocks for BSPP Thread and 1-1/2" Ports.
- Quick-disconnect bowl.



Distance Required To Remove All Bowls Regardless of Drain Option

 = "Most Popular"

Specifications

Flow Capacity*	3/4 1	270 SCFM (127 dm ³ /s) 280 SCFM (132 dm ³ /s)
Operating Temperature	32 to 175°F (0 to 80°C)	
Maximum Supply Pressure	250 PSIG (17 bar)	
Standard Filtration	Micron	5
Useful Retention**	oz. (cm ³)	6.8 (200)
Port Size	NPT	3/4, 1
Weight	lb. (kg)	3.5 (1.6)

* Inlet pressure 100 PSIG (6,9 bar). Pressure drop 5 PSID (0,3 bar).

** Useful retention refers to volume below the quiet zone baffle.

"F" Series Filters, Type "A" 5 micron elements: All Wilkerson Type "A" 5 micron elements **meet or exceed** ISO Class 3 for maximum particle size and concentration of solid contaminants.

Materials of Construction

Body	Aluminum
Bowls	Aluminum
Deflector	Plastic
Baffle	Plastic
Filter Element	Sintered Polyethylene
Seals	Nitrile
Sight Gauge	Polyamide (Nylon)

F39 Filter Dimensions

A	A _(PB)	B	C	D [†]
3.62 92mm	5.91 150mm	3.62 92mm	1.38 35mm	9.57 243mm
E [†]	F			
10.95 278mm	4.92 125mm			

[†]With Manual Drain or Internal Auto Drain

F39 Series Particulate Filters

F39 Filter Kits & Accessories

Bowl Kits –

- Metal Bowl – Sight Gauge / Internal Auto Drain P3NKA00BSA
- Sight Gauge / Manual Drain P3NKA00BSM

Bowl Latch Kit C11A33

Sight Gauge Kit P3NKA00PE

Drain Kit – Internal Auto Drain PS506

Manual Drain PS512

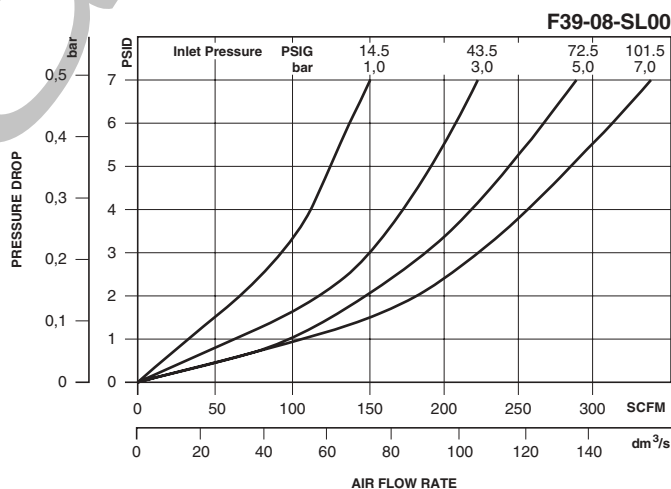
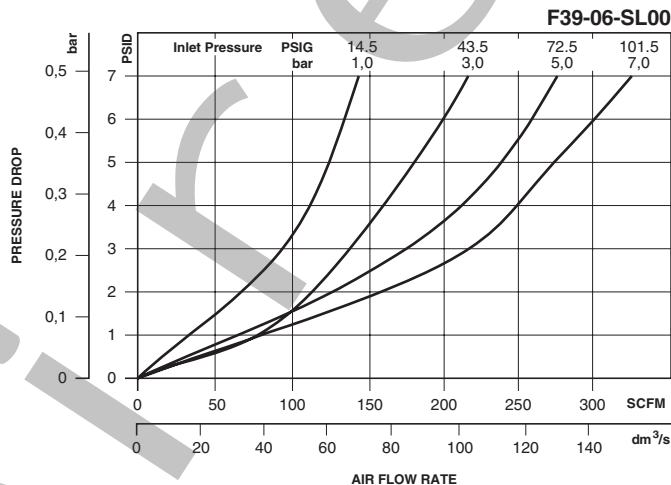
Filter Elements – 40 Micron P3NKA00ESG

5 Micron P3NKA00ESE

Activated Carbon P3NKA00ESA

Mounting Bracket Kit P3NKA00MW

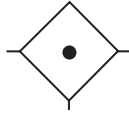
 = "Most Popular"



Ordering Information		
Model Type	Port Size	Metal Bowl Sight Gauge
Manual Drain	3/4	F39-06-SL00
	1	F39-08-SL00
Automatic Mechanical Drain	3/4	F39-06-SH00
	1	F39-08-SH00

M39 Series Coalescing Filters

Coalescing Filter M39



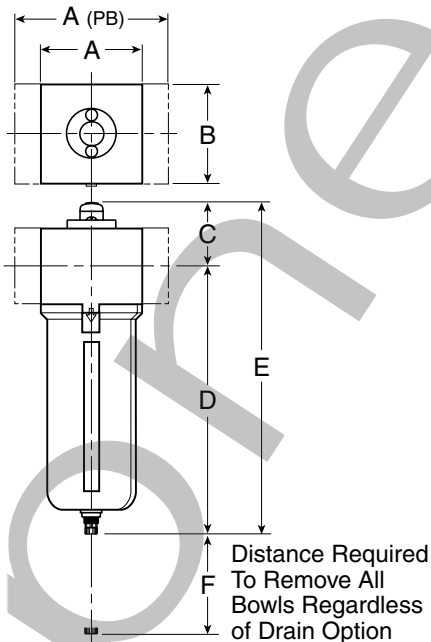
Coalescing Filter



M39-08-SL00

Features

- High-efficiency removal of water, oil aerosols, and solid particulate contaminants down to 0.01 ppm/wt with minimum pressure drop.
- Modern design and appearance.
- Pressure differential indicator standard.
- 3/4" and 1" NPT ports.
- High flow capacity.
- Quick-disconnect bowl.
- Port Blocks for BSPP Thread and 1-1/2" Port.



= "Most Popular"

Specifications

Flow Capacity*	3/4 1	115 SCFM (54 dm ³ /s) 120 SCFM (57 dm ³ /s)
Operating Temperature	32 to 175°F (0 to 80°C)	
Maximum Supply Pressure	Metal Bowl	250 PSIG (17 bar)
Standard Filtration	Micron	(B) 0.5, (C) 0.01
Useful Retention**	oz. (cm ³)	2.89 (84.9)
Port Size	NPT	3/4, 1
Weight	lb. (kg)	3.5 (1.6)

* Inlet pressure 101.5 PSIG (7 bar). Pressure drop 3 PSID (0.2 bar).
** Useful retention refers to useable bowl capacity below the element.

"M" Series Coalescing Filters, with Type "B" 0.5 micron elements: All Wilkerson Type "M" Oil Removal (Coalescing) Filters with Type "B" 0.5 micron elements **exceed ISO Class 2** for maximum particle size and concentration of solid contaminants, and exceed Class 3 on maximum oil content (ppm/wt).

"M" Series Coalescing Filters, with Type "C" 0.01 micron elements: All Wilkerson Type "M" Oil Removal (Coalescing) Filters with Type "C" 0.01 micron elements **exceed ISO Class 1** for maximum particle size and concentration of solid contaminants, and exceed Class 1 on maximum oil content (ppm/wt).

Materials of Construction

Body	Aluminum		
Bowls	Aluminum		
Filter Element	Type B, C	Borosilicate and Felt Glass Fibers	
Seals	Nitrile		
Sight Gauge	Polyamide (Nylon)		

M39 Coalescing Filter Dimensions				
A	A _(PB)	B	C	D [†]
3.62 92mm	5.91 150mm	3.62 92mm	2.30 58.5mm	9.57 243mm
E [†]	F			
11.90 302mm	4.92 125mm			

[†]With Manual Drain or Internal Auto Drain

M39 Series Coalescing Filters

M39 Filter Kits & Accessories

Bowl Kits –

- Metal Bowl – Sight Gauge / Internal Auto Drain P3NKA00BSA
- Sight Gauge / Manual Drain P3NKA00BSM

Bowl Latch Kit C11A33

Sight Gauge Kit P3NKA00PE

DPI Replacement Kit PS781

Drain Kit – Internal Auto Drain PS506

Manual Drain PS512

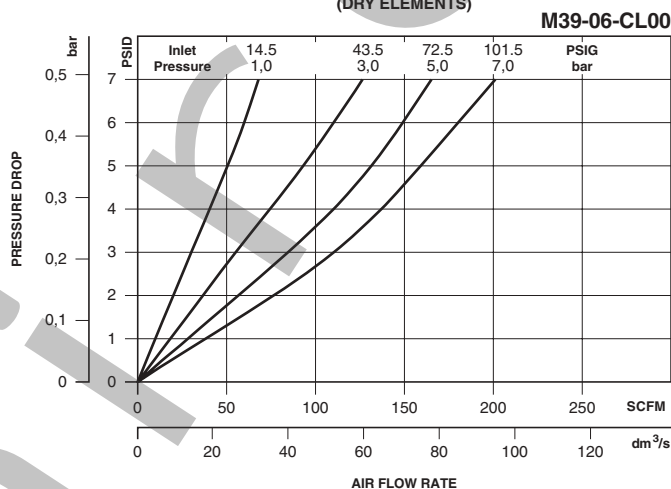
Filter Elements – Grade 6 / Type C P3NKA00ESC

Grade 10 / Type B P3NKA00ES9

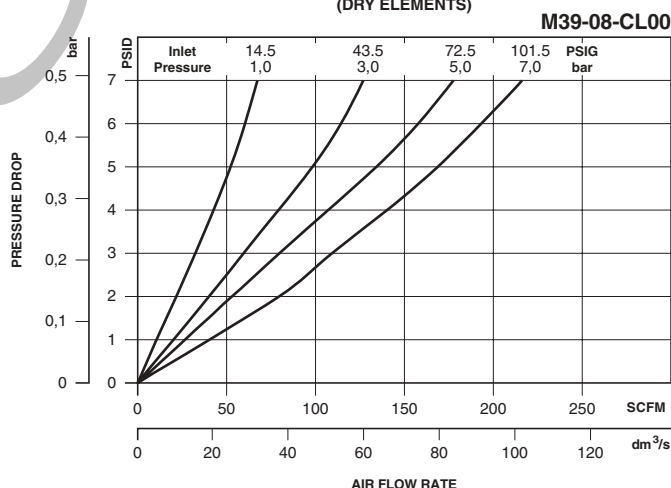
Mounting Bracket Kit P3NKA00MW

 = "Most Popular"

M39 FLOW CURVES, 3/4" SIZES, C ELEMENTS
(DRY ELEMENTS)



M39 FLOW CURVES, 1" SIZES, C ELEMENTS
(DRY ELEMENTS)

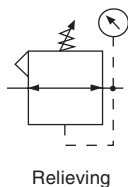


Ordering Information

Model Type	Port Size	Metal Bowl/Sight Gauge/ C Element
Manual Drain	3/4	M39-06-CL00
	1	M39-08-CL00
Automatic Mechanical Drain	3/4	M39-06-CH00
	1	M39-08-CH00

R39 Series Regulators

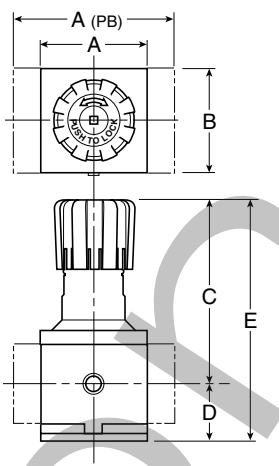
Regulator R39



R39-06-F000

Features

- Balanced valve design.
- Solid central piston for extended life.
- 3/4" and 1" NPT ports.
- Port blocks available for BSPP Thread and 1-1/2" port.



Specifications

Flow Capacity*	3/4	520 SCFM (245 dm ³ /s)
	1	600 SCFM (283 dm ³ /s)
Operating Temperature	32 to 175°F (0 to 80°C)	
Maximum Supply Pressure	250 PSIG (17 bar)	
Adjusting Range Pressure	0-125 PSIG (0-8,6 bar)	
Port Size	NPT	3/4, 1
Gauge Port	1/4	
Weight	lb. (kg)	6.2 (1.9)

* Inlet pressure 100 PSIG (6,9 bar). Secondary pressure 90 PSIG (6,2 bar).

Materials of Construction

Body	Aluminum
Cap & Bonnet	Aluminum
Knob	Plastic
Piston	Plastic
Poppet Assembly	Brass/Nitrile
Springs	Steel
Seals	Nitrile

R39 Regulator Dimensions

A	A _(PB)	B	
3.62 92mm	5.91 150mm	3.62 92mm	
C	D	E	
6.38 162mm	2.08 53mm	8.46 215mm	

CAUTION:

REGULATOR PRESSURE ADJUSTMENT – The working range of knob adjustment is designed to permit outlet pressures within their full range. Pressure adjustment beyond this range is also possible because the knob is not a limiting device. This is a common characteristic of most industrial regulators, and limiting devices may be obtained only by special design.

⚠ WARNING

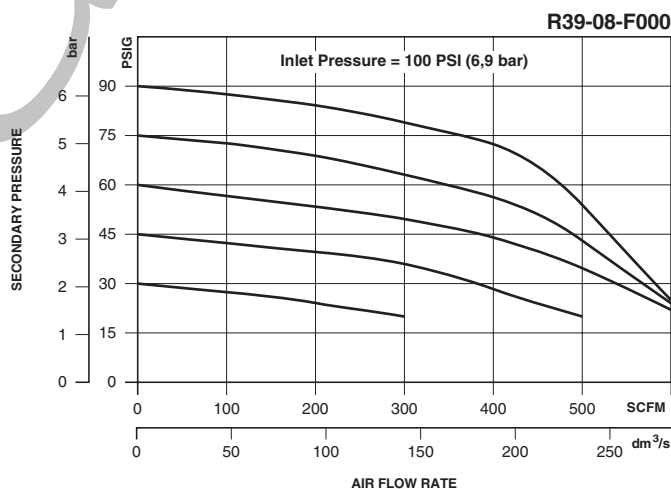
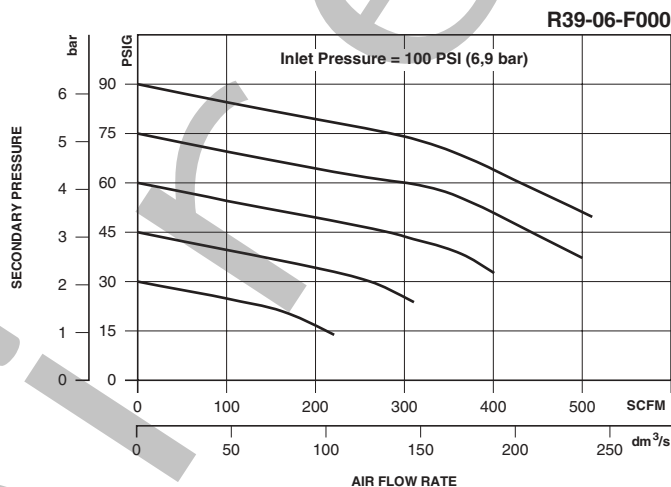
**Do not connect regulator to bottled gas.
Do not exceed maximum primary pressure rating.
Product rupture can cause serious injury.**

R39 Series Regulators

R39 Regulator Kits and Accessories

- Control Knob** P3NKA00PN
- Gauges** – 60 PSIG (0-4 bar) P781641
- 160 PSIG (0-11 bar) P781642
- 300 PSIG (0-20 bar) P781643
- Service Kit** – Relieving P3NKA00RR
- Non-relieving P3NKA00RN
- Springs** – 1-60 PSIG Range C10A1304
- 2-125 PSIG Range C10A1308
- 5-250 PSIG Range C10A1317
- Mounting Bracket Kit** P3NKA00MW

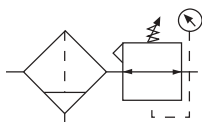
= "Most Popular"



For best performance, regulated pressure should always be set by increasing the pressure up to the desired setting.

Ordering Information		
Model Type	Port Size	Without Gauge 0-125 PSI (0-8,6 bar)
Relieving	3/4 1	R39-06-F000 R39-08-F000

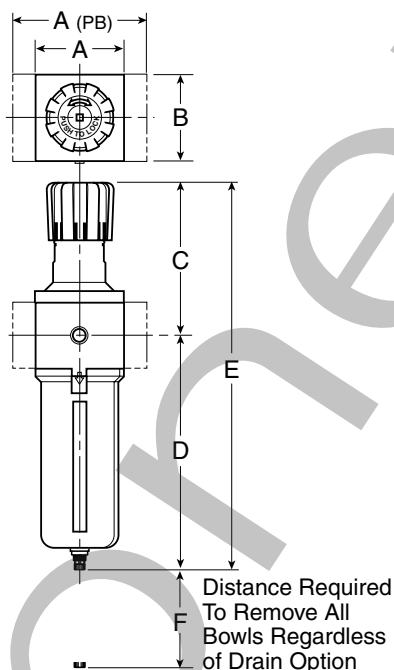
Filter/Regulator B39



B39-06-FL00

Features

- 5 micron filtration.
- Balanced valve design.
- Solid control piston for extended life.
- 3/4" and 1" NPT ports.
- Port blocks available for BSPP Thread and 1-1/2" port.
- Quick disconnect bowl.
- High flow capacities.



CAUTION:

REGULATOR PRESSURE ADJUSTMENT – The working range of knob adjustment is designed to permit outlet pressures within their full range. Pressure adjustment beyond this range is also possible because the knob is not a limiting device. This is a common characteristic of most industrial regulators, and limiting devices may be obtained only by special design.

= "Most Popular"

Specifications

Flow Capacity*	3/4 1	500 SCFM (236 dm ³ /s) 560 SCFM (264 dm ³ /s)
Operating Temperature	32 to 175°F (0 to 80°C)	
Maximum Supply Pressure	250 PSIG (17 bar)	
Standard Filtration***	Micron	5
Useful Retention**	oz. (cm ³)	6.8 (200)
Adjusting Range Pressure	0-125 PSIG (0-8,6 bar)	
Port Size†	NPT	3/4, 1
Gauge Port	1/4	
Weight	lb. (kg)	5.3 (2.4)

*Inlet pressure 100 PSIG (6,9 bar). Secondary pressure 90 PSIG (6,2 bar).

**Useful retention refers to volume below the quiet zone baffle.

†Port blocks available for BSPP thread & 1-1/2" port.

***Type "A" 5 micron elements: All Wilkerson Type "A" 5 micron elements meet or exceed ISO Class 3 for maximum particle size and concentration of solid contaminants.

Materials of Construction

Body & Bowl	Aluminum
Element Retainer, Deflector and Baffle	Plastic
Filter Element	Sintered Polyethylene
Seals	Nitrile
Springs	Steel
Valve Assembly	Brass/Nitrile
Piston	Plastic
Sight Gauge	Polyamide (Nylon)

B39 Filter / Regulator Dimensions				
A	A _(PB)	B	C	D [†]
3.62 92mm	5.91 150mm	3.62 92mm	6.38 162mm	9.57 243mm
E [†]	F			
15.95 405mm	4.92 125mm			

[†]With Manual Drain or Internal Auto Drain

⚠ WARNING

**Do not connect regulator to bottled gas.
Do not exceed maximum primary pressure rating.
Product rupture can cause serious injury.**

B39 Series Filter / Regulators

B39 Filter / Regulator Kits & Accessories

Bowl Kits –

- Metal Bowl – Sight Gauge / Internal Auto Drain P3NKA00BSA
- Sight Gauge / Manual Drain P3NKA00BSM

Bowl Latch Kit C11A33

Control Knob P3NKA00PN

Drain Kit – Internal Auto Drain PS506

Manual Drain PS512

Filter Element Kits – 40 Micron P3NKA00ESG

5 Micron P3NKA00ESE

Activated Carbon P3NKA00ESA

Gauges – 60 PSIG (0 to 400 kPa) P781641

160 PSIG (0 to 1100 kPa) P781642

300 PSIG (0 to 2000 kPa) P781643

Service Kit – Relieving P3NKA00RR

Non-Relieving P3NKA00RN

Sight Gauge Kit P3NKA00PE

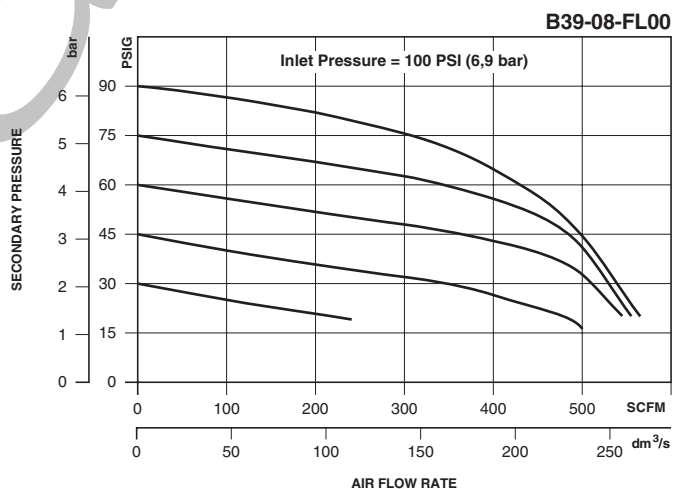
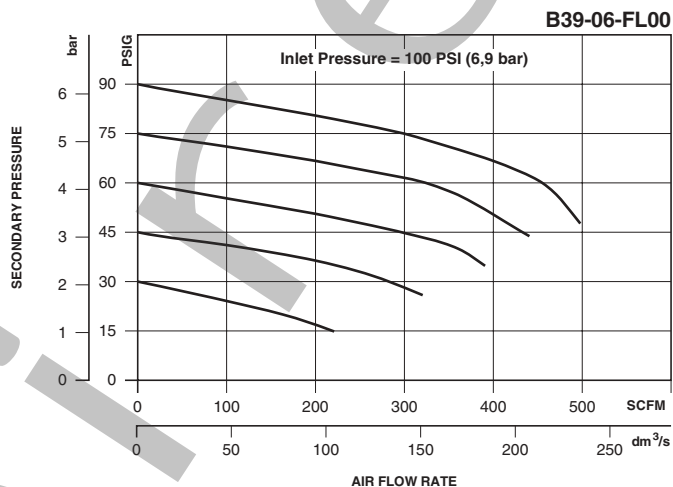
Springs – 1-60 PSIG Range C10A1304

2-125 PSIG Range C10A1308

5-250 PSIG Range C10A1317

Mounting Bracket Kit P3NKA00MW

 = "Most Popular"

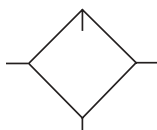


For best performance, regulated pressure should always be set by increasing the pressure up to the desired setting.

Ordering Information		
Model Type	Port Size	Metal Bowl/Sight Gauge without Gauge 2-125 PSIG (0,4-8,6 bar)
Manual Drain	3/4	B39-06-FL00
	1	B39-08-FL00

L39 Series EconOmist Lubricators

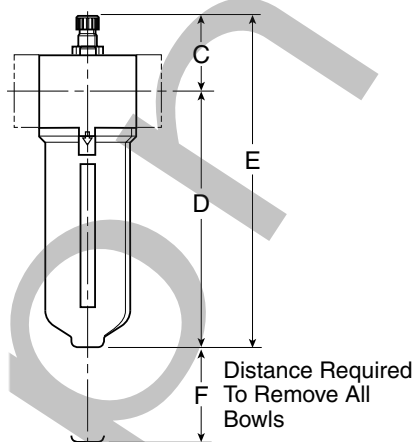
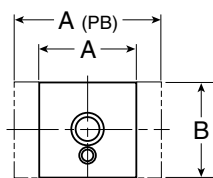
**Lubricator
L39**



L39-06-LD00

Features

- Transparent sight dome for 360° visibility.
- 3/4" and 1" NPT ports.
- Fillable under pressure.
- Quick-disconnect bowl.
- High flow capacities and proportional oil delivery.
- Port blocks available for BSPP Thread and 1-1/2" port.



Distance Required
To Remove All
Bowls

= "Most Popular"

Specifications

Flow Capacity*	3/4, 1	270 SCFM (127 dm ³ /s)
Operating Temperature	32 to 175°F (0 to 80°C)	
Maximum Supply Pressure	250 PSIG (17 bar)	
Useful Retention	oz. (cm ³)	18 (510)
Port Size†	NPT	3/4, 1
Weight	lb. (kg)	3.5 (1.6)

*Inlet pressure 100 PSIG (6,9 bar). Pressure drop 5 PSID (0,3 bar).

†Port blocks available for BSPP thread & 1-1/2" port.

Materials of Construction

Body	Aluminum
Bowl	Aluminum
Sight Dome	Polycarbonate
Seals	Nitrile
Sight Gauge	Polyamide (Nylon)
Suggested Lubricant	ISO/ASTM VG32

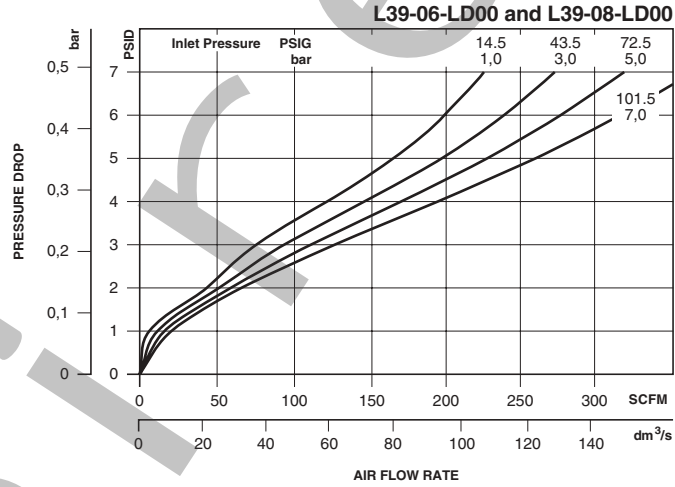
L39 Lubricator Dimensions				
A	A _(PB)	B	C	D
3.62 92mm	5.91 150mm	3.62 92mm	2.81 71mm	9.00 229mm
E	F			
11.81 300mm	4.92 125mm			

L39 Series EconOmist Lubricators

L39 Lubricator Kits & Accessories

- Adjustment Knob P04121
- Bowl Kits –**
- Metal Bowl – Sight Gauge / Manual Drain P3NKA00BSM
- Bowl Latch Kit** C11A33
- Drain Kit – Manual Drain** PS512
- Fill Cap Kit** P3NKA00PL
- Sight Dome Kit – Polycarbonate** PS740
- Nylon PS740N
- Sight Gauge Kit** P3NKA00PE
- Pressure Fill Adapter Kit** P3NKA00PK
- Service Kit** P3NKA00RL
- Mounting Bracket Kit** P3NKA00MW

 = "Most Popular"



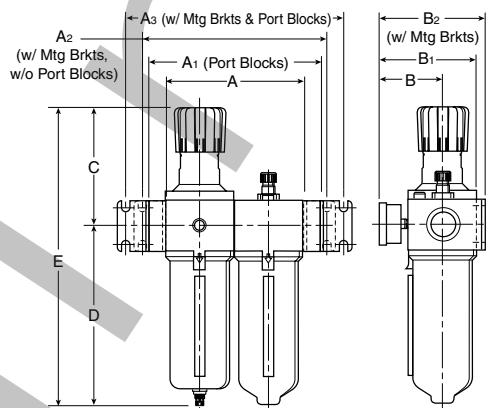
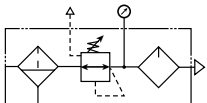
Ordering Information

Model Type	Port Size	Metal Bowl Sight Gauge
No Drain	3/4	L39-06-LD00
	1	L39-08-LD00

Modular Combinations – 39 Hi-Flow Series

- Regulator can be mounted with knob in up or down position.
- See individual component pages for details.

D39 Combination



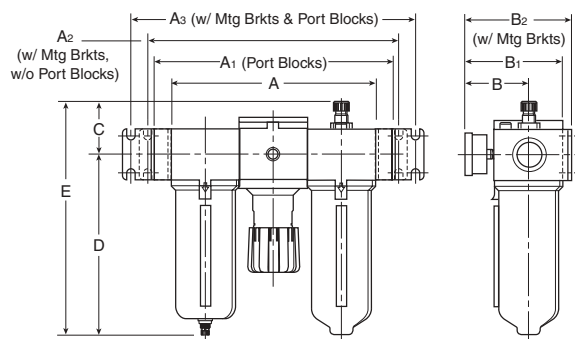
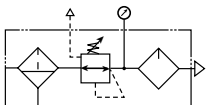
WARNING
Do not connect regulator to bottled gas.
Do not exceed maximum primary pressure rating.
Product rupture can cause serious injury.

Ordering Information		
Model Type	Port Size	Metal Bowl, with Gauge 7-125 PSIG (0,4-8,6 bar)
Manual Drain	1	D39-08-FLG0
Automatic Mechanical Drain	1	D39-08-FHG0

A	A₁	A₂	A₃	B
7.24 184mm	9.53 242mm	9.84 250mm	12.13 308mm	3.62 92mm
B₁	B₂	C	D	E
5.20 132mm	5.74 146mm	6.38 162mm	9.57 243mm	15.95 405mm

All dimensions nominal.

C39 Combination



CAUTION:

REGULATOR PRESSURE ADJUSTMENT –

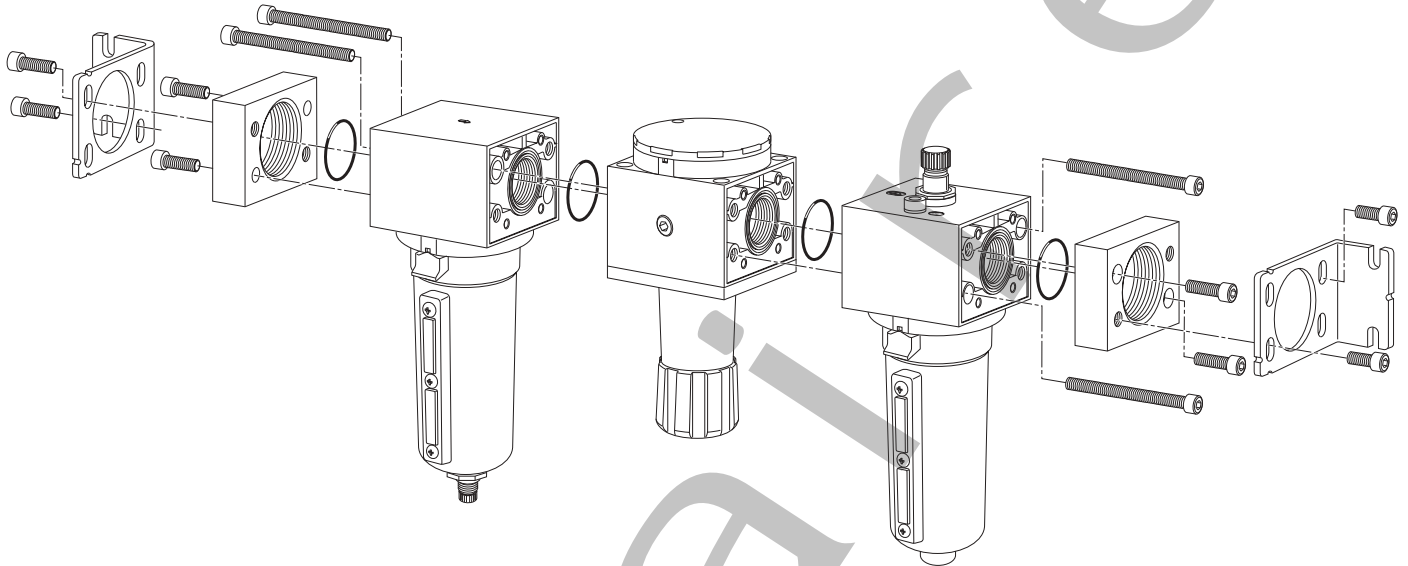
The working range of knob adjustment is designed to permit outlet pressures within their full range. Pressure adjustment beyond this range is also possible because the knob is not a limiting device. This is a common characteristic of most industrial regulators, and limiting devices may be obtained only by special design.

Ordering Information		
Model Type	Port Size	Metal Bowl, with Gauge 7-125 PSIG (0,4-8,6 bar)
Manual Drain	1	C39-08-FLG0
Automatic Mechanical Drain	1	C39-08-FHG0

A	A₁	A₂	A₃	B
10.87 276mm	13.15 334mm	13.46 342mm	15.75 400mm	3.62 92mm
B₁	B₂	C	D	E
5.20 132mm	5.74 146mm	2.81 71mm	9.57 243mm	12.38 314mm

All dimensions nominal.

Modular Accessories – 39 Hi-Flow Series

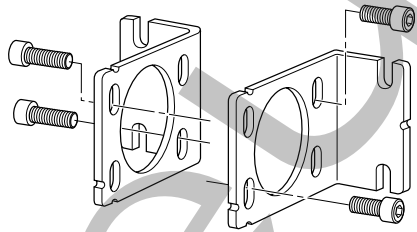


Screws and O-Rings for modular connection come with F, L, and B units.

Mounting Brackets

P3NKA00MW

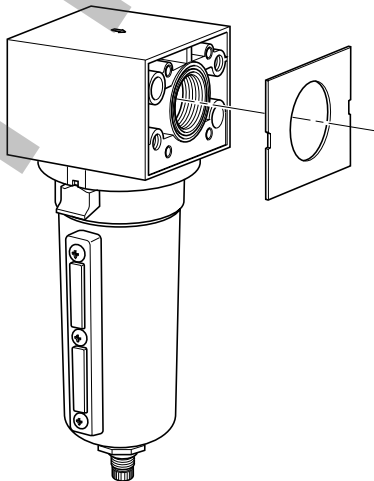
For 1-1/2" BSPP Port Block with E02 fitting application, use Mounting Bracket **P3NKA00MW**



Replacement Body Covers

P3NKA00PM

Each Kit contains two covers. All units are shipped with body covers.



For modular combinations, one side has groove and the mating side is flat. Use the o-ring seal provided in the groove. For some modular combinations, both surfaces may have grooves. In those applications, use o-ring in one groove and square seal provided in the other.

Port Block Kits

Individual Units:

	3/4"	1"	1-1/2"
NPT	P3NKB96CP	P3NKB98CP	P3NKB9BCP
BSPP	P3NKB16CP	P3NKB18CP	P3NKB1BCP

Modular Combinations:

NPT	P3NKB96CL	P3NKB98CL	P3NKB9BCL
BSPP	P3NKB16CL	P3NKB18CL	P3NKB1BCL

Port Block Kits allow units to be installed or removed as modular components.

Each Kit includes all the necessary pieces to make two port connections.

